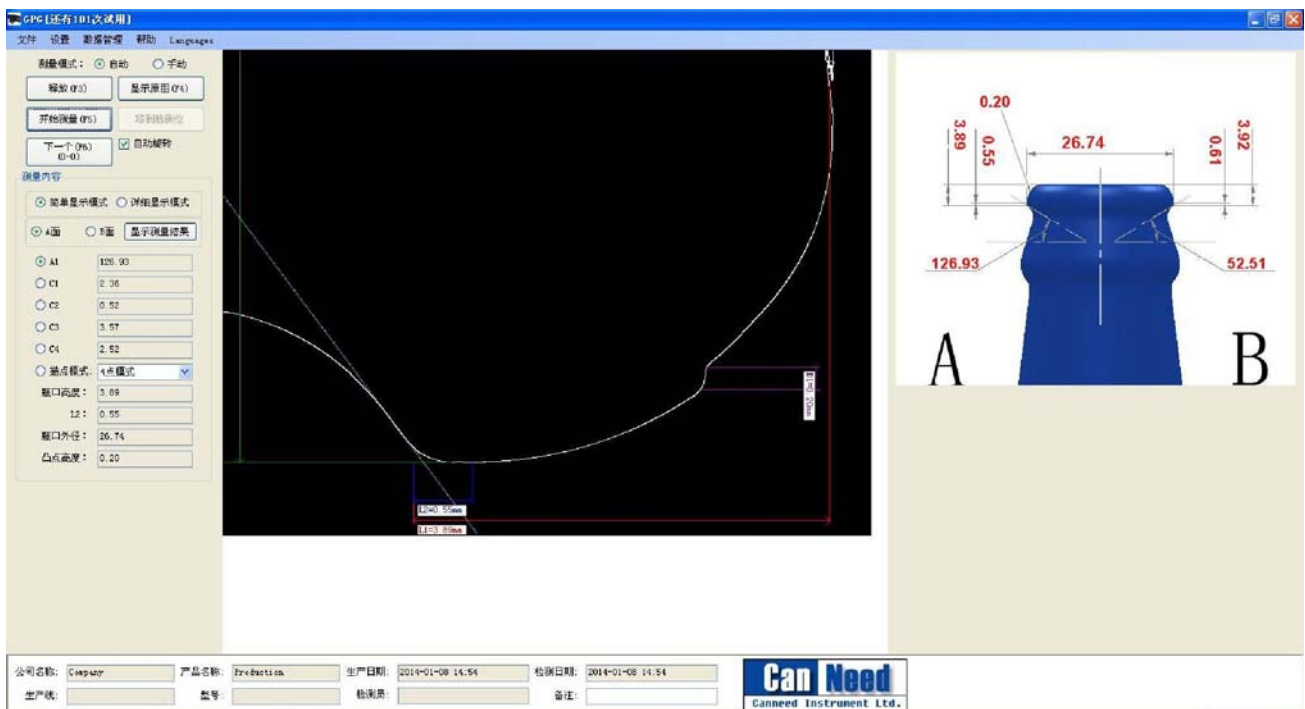
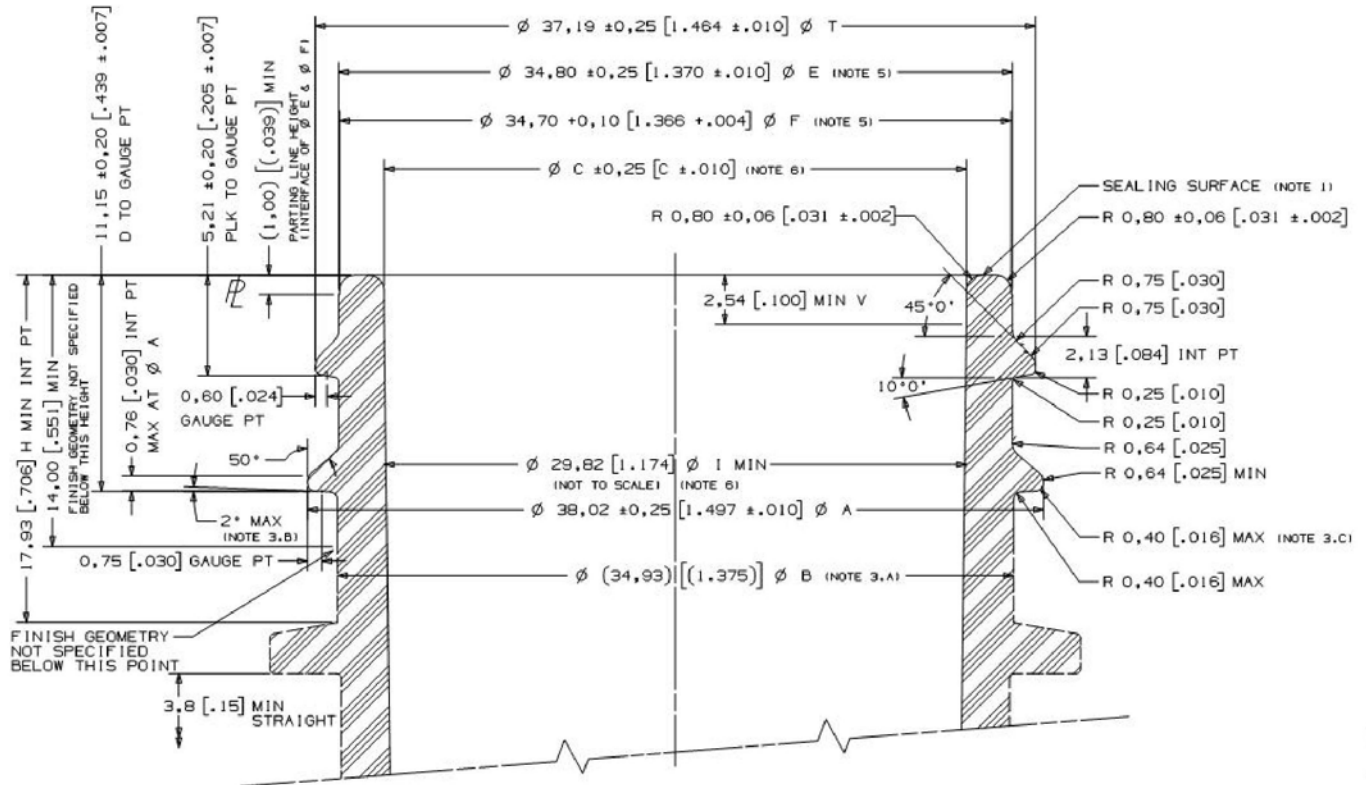


CanNeed-GPG-100 General Profile Gauge

--- Measures PET bottles, glass bottles, cans, ends, rolls and chucks







Key Benefits:

- *Tests on the bottle size - to prevent errors during producing
- * Radius (R2.4; R4; R0.5; R2.4)
- * Arc transition line angle (45°)
- * Interval between Bottle cap positioning line and the bottle neck (3.85mm)
- *Suture burr height of bottle ring
- *Diameter of the bottle mouth
- * Monitoring mold wear, determine when to replace.
- * Eradicate bad profile design

Technical parameters:

- * Division: 0.01mm or higher
- * Angle: 0.1°